

Tooley Pond Mountain

Clare, NY

LEGEND

----- Trail

P Parking

 Trail Head

Distance: 2.1 mi round trip

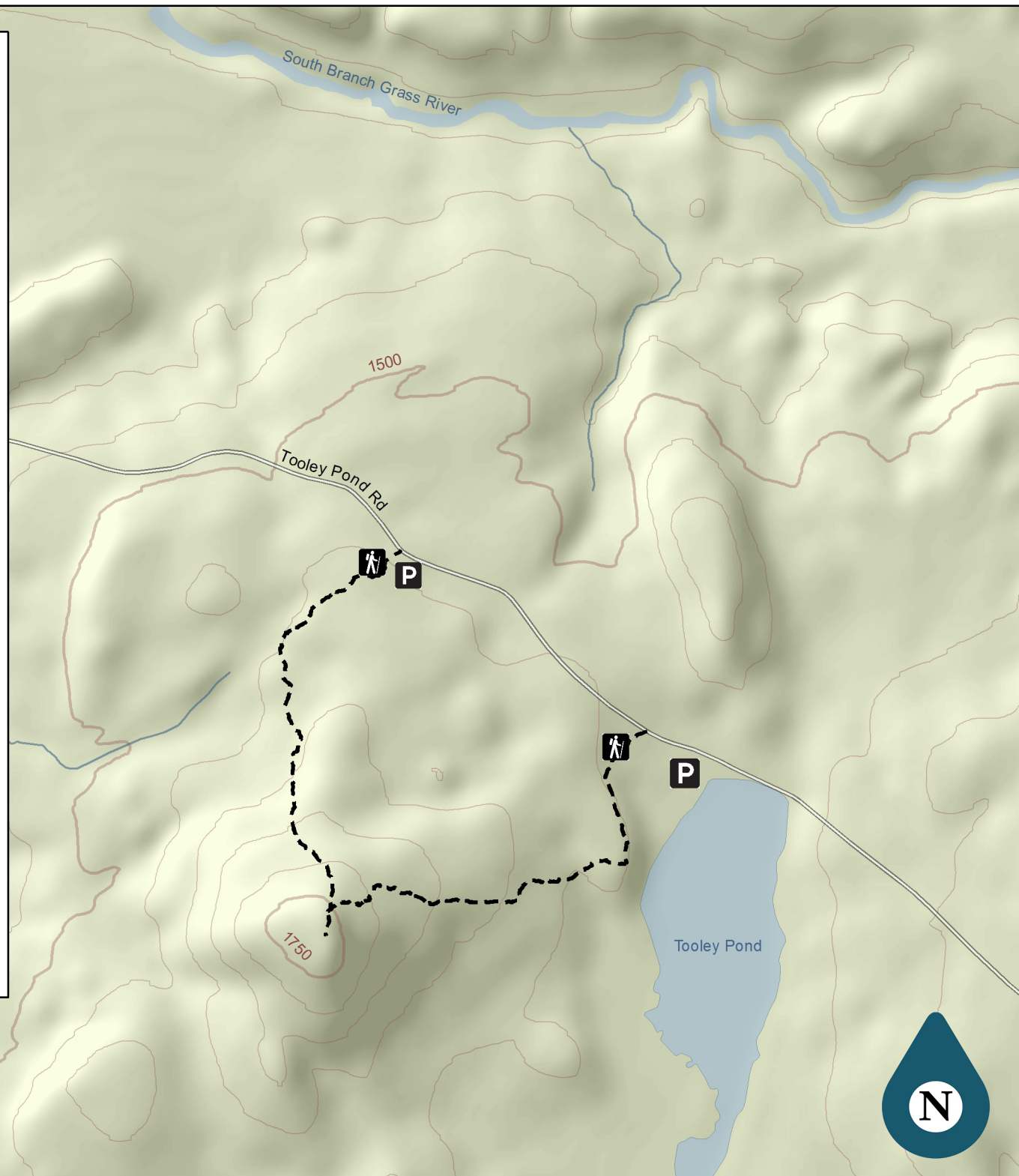
Ascent: 229'

0 0.15 0.3
Miles

0 0.3 0.6
Kilometers

Nature
UpNorth

Data Sources:
Cornell University Geospatial Information Repository
National Hydrography Database



Tooley Pond Mountain, Clare, NY

Distance: 2.1 miles Ascent: 229' Difficulty: Easy Dogs Allowed: Yes

Description:

This small mountain in St. Lawrence County makes a great hike for the whole family. Beginning at the parking lot near Tooley Pond, a short walk north up Tooley Pond Rd. leads to the entrance to the East Trail. The trail crosses a river with a short climb and circles around offering views of Tooley Pond through the trees. Continuing on, the trail continues to gently climb until reaching a junction with the West Trail just before the peak. Bearing left, the trail continues to a partly wooded summit with a clearing where a fire tower once stood offering views of peaks in the distance. To make a loop, bear left on the return and follow the West Trail to another parking area along Tooley Pond Rd. With a 229 foot gentle ascent, this trail is ideal for the whole family in any season.

Note:

Tooley Pond Rd receives minimal maintenance during the winter months – 4wd vehicles are suggested during this time.

Directions:

From Canton, head south on County Rd 27/ Park St. for 20 miles to the village of Degrasse. Make a left on Tooley Pond Rd. the parking for the West Trail will be located on the right in 10 miles and the main parking area near the East Trail by Tooley Pond will be located at 11 miles. Coordinates for the main parking are by Tooley Pond are 44° 16' 28.34" N 74° 55' 8.86" W.

