

SUNY Canton Cross Country Trail Canton, NY

LEGEND

----- Trail

P Parking

 Trail Head

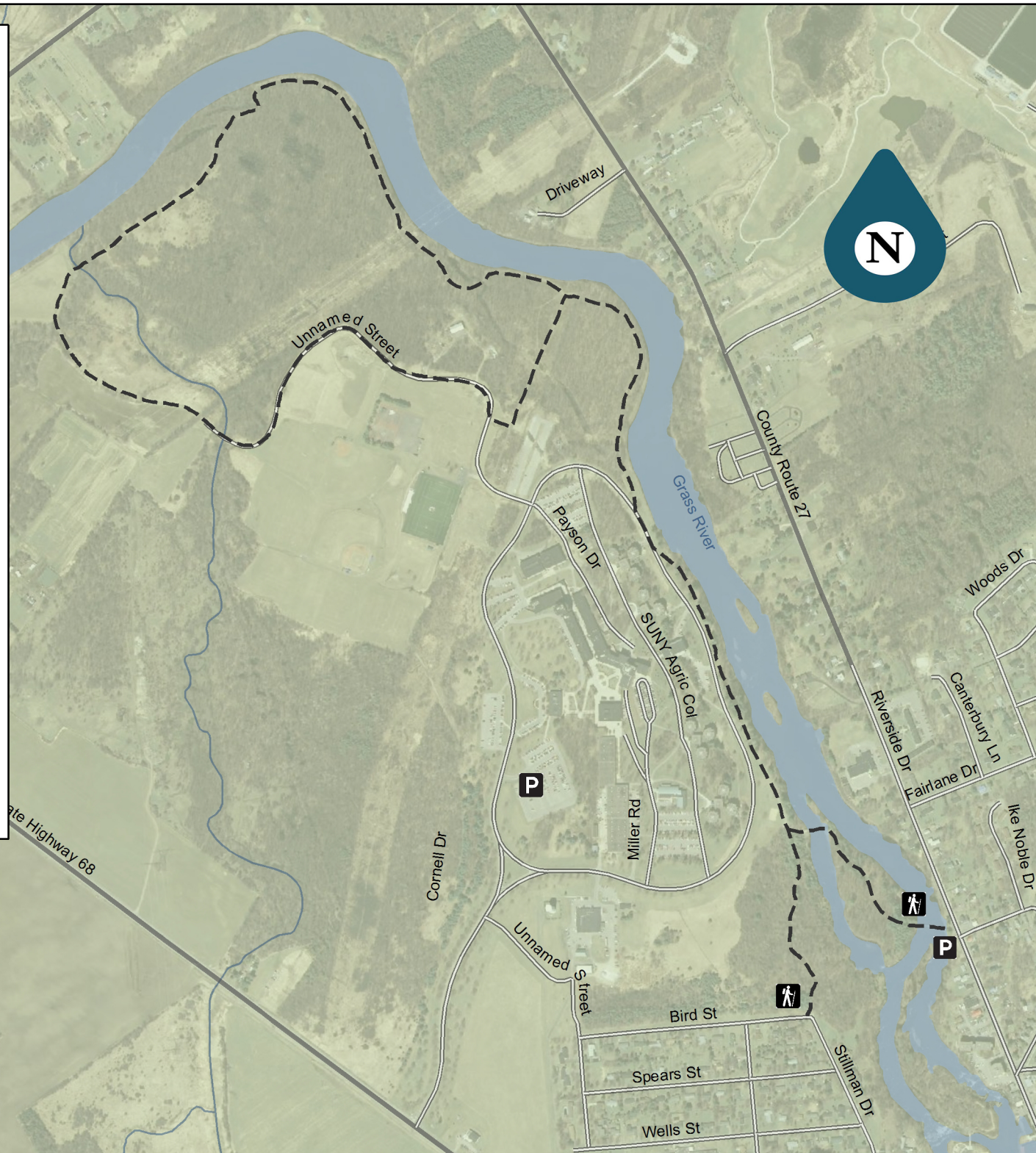
Distance: 3.1 mi

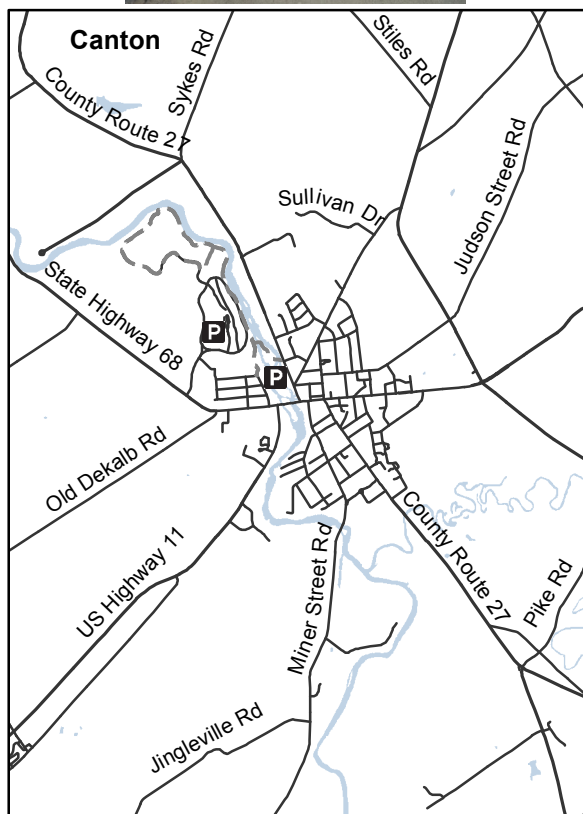
0 0.15 0.3 Miles

0 0.3 0.6 Kilometers

**Nature
UpNorth**

Data Sources:
Cornell University Geospatial Information Repository
National Hydrography Database
NYS Cyber Security





SUNY Canton Cross Country Trail, Canton, NY

Distance: 3.2 miles Difficulty: Easy Dogs Allowed: Yes

Description:

The cross country trail at SUNY Canton is a pleasant, mostly flat path along the Grasse River. It can be accessed from the footbridges over the Grasse off Riverside Drive, behind the Roos House Athletic Center, and from Parking Lot 6 on the SUNY Canton campus. From the footbridges, continue along the paved path, then along grass area between the road and the river until the trail enters the woods, where it is more distinct. In the spring look for an impressive display of trillium in bloom on both sides of the trail as you enter the woods. The trail winds through lowland forest and old field habitats until it eventually emerges behind the athletic fields, where you can go left towards the athletic center or right and around the baseball fields before climbing up to Parking Lot 6. This is also a great trail for cross country skiing in winter.

Directions:

For Lot 6 Parking: From Route 68 in Canton, turn into the entrance of SUNY Canton (Cornell Drive) and proceed 1/2 mile, taking a left at the fork. Lot 6 is on the left. Limited parking is also available at the footbridge off Riverside Drive in Canton, 0.3mi from the intersection of Main Street and Riverside in downtown Canton.