


# Azure Mountain


## Waverly, NY

### LEGEND

--- Trail

 Parking

 Trail Head

 Fire Tower

Distance: 2.0 miles round trip

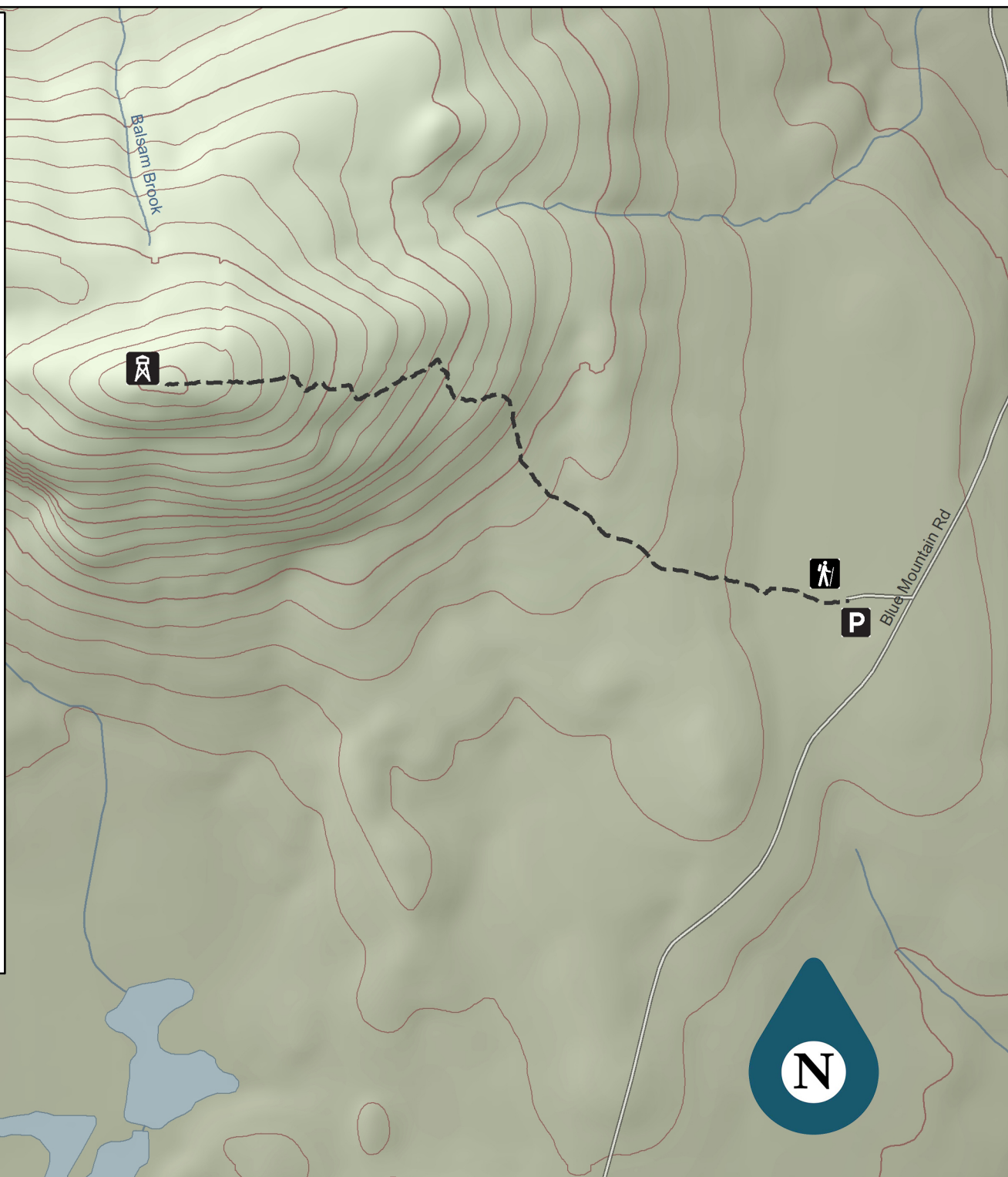
0 0.15 0.3  
Miles

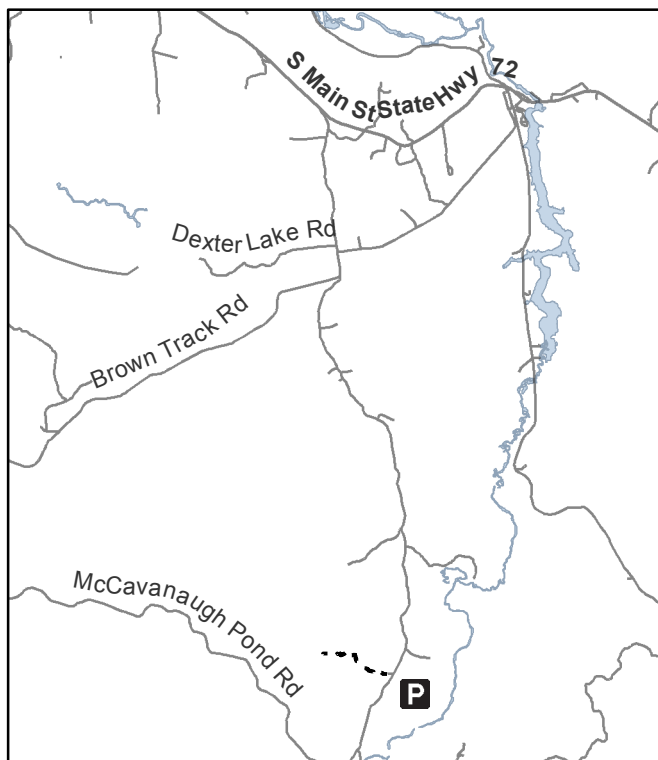
0 0.3 0.6  
Kilometers

**Nature**  
**UpNorth**

Data Sources:

US Census Bureau, National Hydrography Database,  
USDA NRCS Geospatial Data Gateway, NYS Cyber  
Security





# Azure Mountain, Waverly, NY

Distance: 2.0 miles round trip    Use: Hiking    Ascent: 1000ft    Difficulty: Moderate    Dogs Allowed: Yes

## Description

Azure Mountain is a day hike perfect for those looking for a short walk with a great reward. The one mile trail to the summit covers steep yet navigable terrain. There are plenty of flat areas for water breaks and rest stops. While it is steep in some areas, with appropriate stops it is suitable for families with small children. The hike travels up 1000 ft of elevation gain through a mixed hardwood forest with great potential for wildlife viewing. The summit includes a 35-foot fire tower that affords 360 degree views of the St. Lawrence River Valley and Northern Adirondacks. From the summit, views of the northern Adirondack boreal forest are stunning and on a clear day you can see the peaks of Whiteface, Colden, Gothics, Marcy, and Algonquin. Expect about an hour hike for moderate hikers, bring water and snacks and an extra layer for warmth on the summit.

## Things To Look For

Enjoy 360 degree views from the summit fire tower. On the southwest end of the summit area, an impressive boulder, called a "glacial erratic" sits perched on the edge of a rocky outcrop.

## Directions

From NY 11B from Potsdam turn south onto NY 458. Turn right onto Blue Mountain Road four miles past the town of St. Regis Falls. Continue 7 miles and look on the right for a small sign and parking area. The trailhead GPS coordinates are 44°32'16.49"N 74°29'11.47"W