

# Mount Arab


## Piercefield, NY

### LEGEND

----- Mt. Arab Trail

 Parking

 Trail Head

 Fire Tower

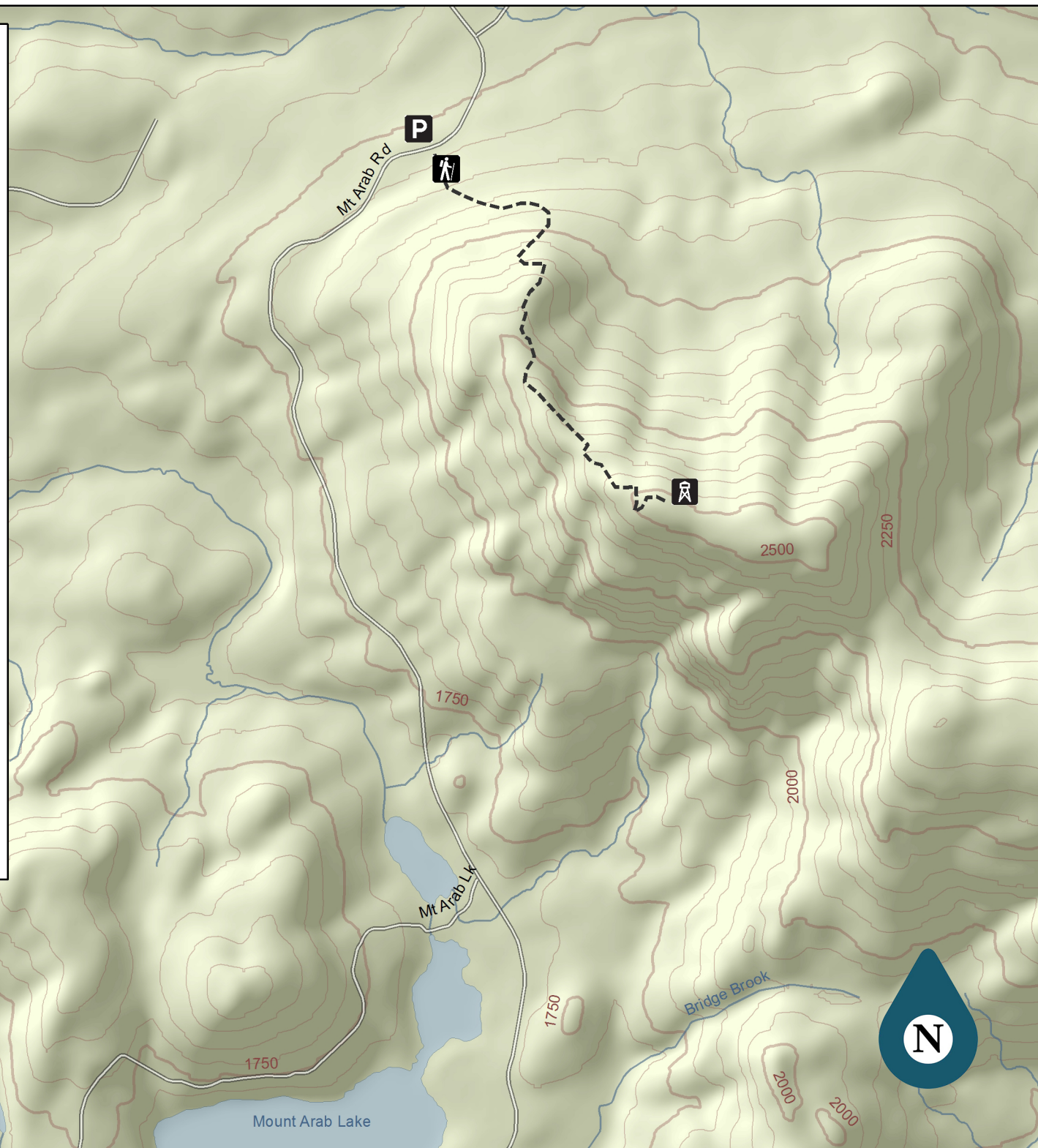
Distance: 1.5 mi round trip

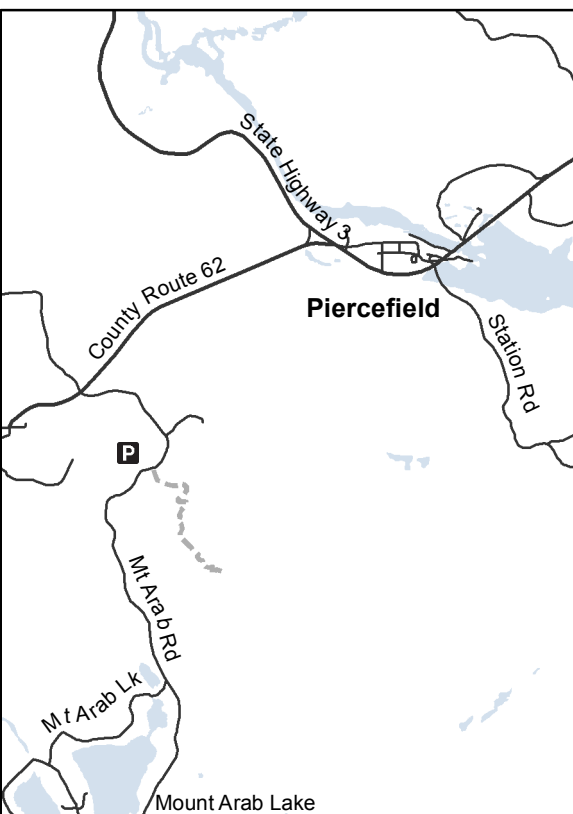
0 0.25 0.5  
Miles

0 0.25 0.5  
Kilometers

**Nature**  
**UpNorth**

Data Sources:  
Cornell University Geospatial Information Repository  
National Hydrography Database





## Mount Arab, Piercefield, NY

Distance: 1.5 miles round trip    Use: Hiking    Ascent: 760ft    Difficulty: Moderate  
Dogs Allowed: Yes

### Description:

Mt. Arab is a great hike for families and those looking to enjoy some amazing views after a very short hike. The trail is short but can be steep at times, still great for hikers with kids and pets. You follow the trail through a dense hardwood forest before emerging at the summit in a mixed conifer forest with great autumn color around the end of September to early October. At the summit there is a lookout tower with maps to help identify surrounding landmarks, and a ranger station that is kept up by the Friends of Mount Arab group. From the summit and fire tower you can see Arab Lake, Tupper Lake, and the northwest foothills of the Adirondacks. On a clear day you can see all the way to some of the high peaks.

### Directions:

Mount Arab is located 3 miles West of Tupper Lake. From State Highway 3 in Piercefield, turn onto Conifer Road for 1.6 miles and take the first left onto Mount Arab road. You will cross a railroad track and continue until you see the parking lot on your right. The trailhead is across the road and is marked by a sign.

\*The GPS coordinates are 44°12' 48.52"N 74°35' 44.76"W for the trailhead.